



1111 Travis Street
Houston, TX 77002
Phone: 713-209-2400
Website: www.hilcorp.com

ABOUT HILCORP ENERGY COMPANY

Hilcorp Energy Company is one of the largest privately held oil and natural gas producers in America.

It is Hilcorp's commitment to never compromise or relax our values in the pursuit of profit or gain. We stress doing the right thing; we treat people fairly; and we play by the rules – all the rules, with honesty and integrity.

WHAT DOES HILCORP ENERGY COMPANY DO IF A LEAK OCCURS?

Hilcorp is engaged in constant activity to maintain safe pipeline operations. In the event of a pipeline release the Hilcorp Emergency Response Team will take the following steps:

1. Assess the situation.
2. Respond to protect people, property, and the environment.
3. Call for assistance of trained personnel.
4. Work together.

MAINTAINING SAFETY AND INTEGRITY OF PIPELINES

Hilcorp Energy Company invests significant time and capital maintaining the quality and integrity of their pipeline systems. Hilcorp Energy Company utilizes aerial surveillance and/or on-ground observers to identify potential dangers.

Gas transmission and hazardous liquid pipeline operators have developed supplemental hazard and assessment programs known as Integrity Management Programs (IMPs). Specific information about Hilcorp Energy Company's program may be found by contacting us directly.

HOW TO GET ADDITIONAL INFORMATION

For an overview of Hilcorp Energy Company, contact us at 713-209-2400.

**EMERGENCY CONTACT:
1-713-209-2400**

PRODUCTS / DOT GUIDEBOOK ID# / GUIDE#:

Carbon Dioxide	1013	120
Crude Oil	1267	128
Natural Gas	1971	115

**TEXAS
COUNTIES OF OPERATION:**

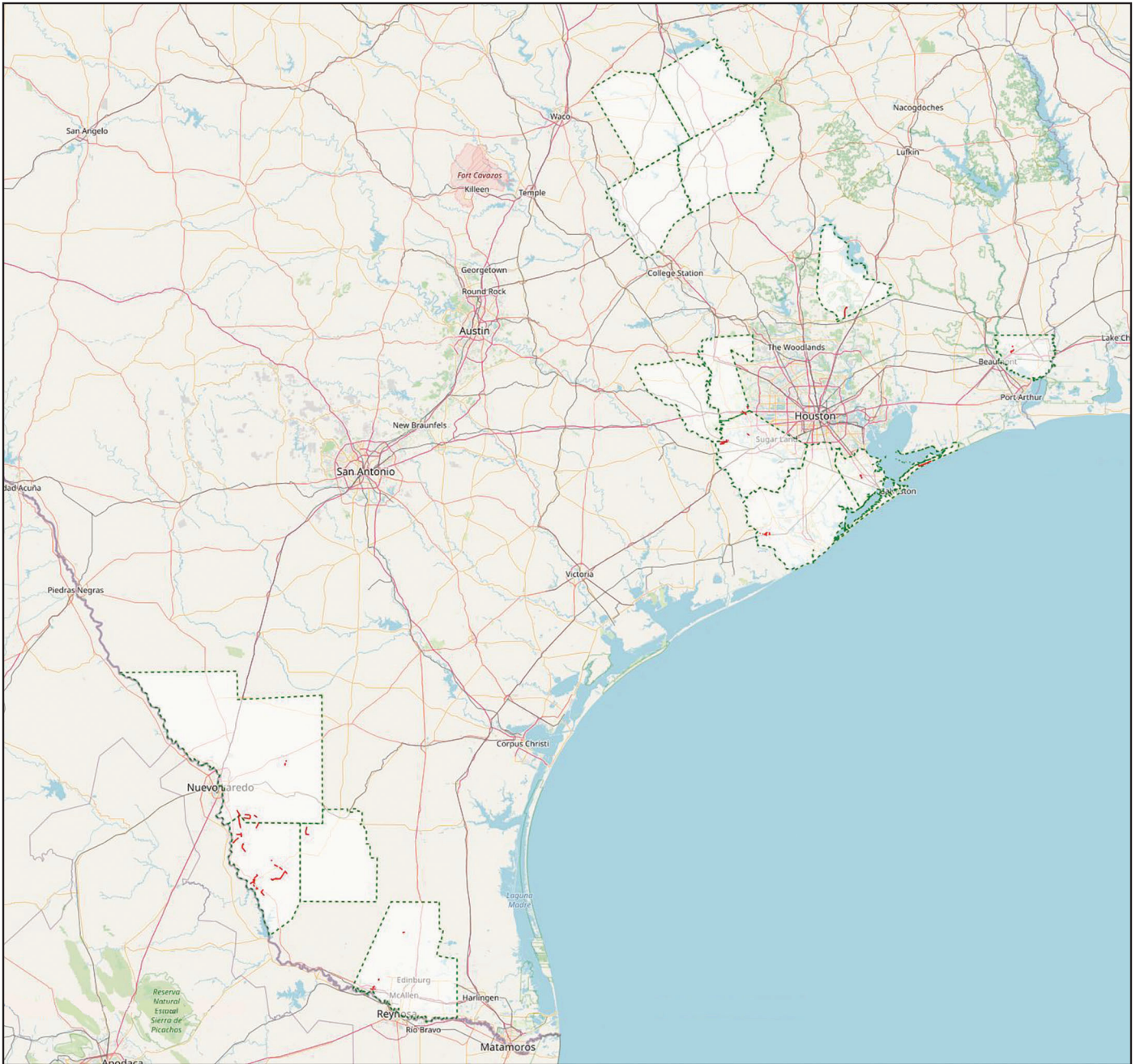
Aransas	Limestone
Brazoria	Orange
Brooks	Robertson
Edwards	San Jacinto
Fort Bend	Starr
Freestone	Sutton
Galveston	Terrell
Hidalgo	Val Verde
Jefferson	Waller
Jim Hogg	Webb
Kenedy	Zapata
Leon	

Changes may occur. Contact the operator to discuss their pipeline systems and areas of operation.



PRODUCTS TRANSPORTED IN YOUR AREA

PRODUCT	LEAK TYPE	VAPORS
CARBON DIOXIDE (CO2)	Gas	Vapors from liquefied gas are initially heavier than air and spread along ground.
HEALTH HAZARDS		Product is a simple asphyxiant and non-flammable. Vapors may cause dizziness or asphyxiation without warning and may be toxic if inhaled. Contact with gas or liquefied gas may cause burns, severe injury and/or frostbite.
HAZARDOUS LIQUIDS [SUCH AS: CRUDE OIL, DIESEL FUEL, JET FUEL, GASOLINE, AND OTHER REFINED PRODUCTS]	Liquid	Initially heavier than air and spread along ground and collect in low or confined areas. Vapors may travel to source of ignition and flash back. Explosion hazards indoors, outdoors or in sewers.
HEALTH HAZARDS		Inhalation or contact with material may irritate or burn skin and eyes. Fire may produce irritating, corrosive and/or toxic gases. Vapors may cause dizziness or suffocation. Runoff from fire control or dilution water may cause pollution.
NATURAL GAS	Gas	Lighter than air and will generally rise and dissipate. May gather in a confined space and travel to a source of ignition.
HEALTH HAZARDS		Will be easily ignited by heat, sparks or flames and will form explosive mixtures with air. Vapors may cause dizziness or asphyxiation without warning and may be toxic if inhaled at high concentrations. Contact with gas or liquefied gas may cause burns, severe injury and/or frostbite.



Base map courtesy of openstreetmap.org